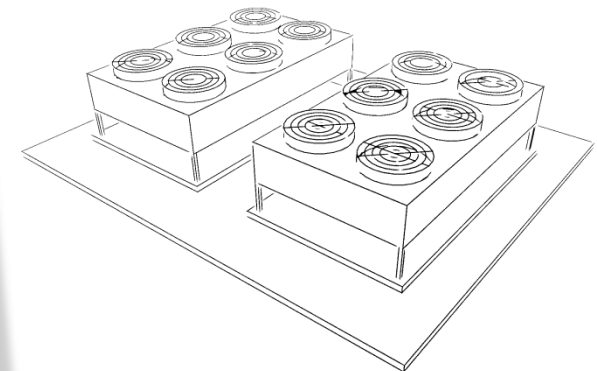
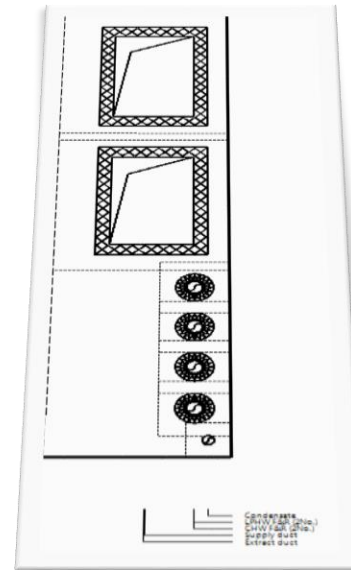
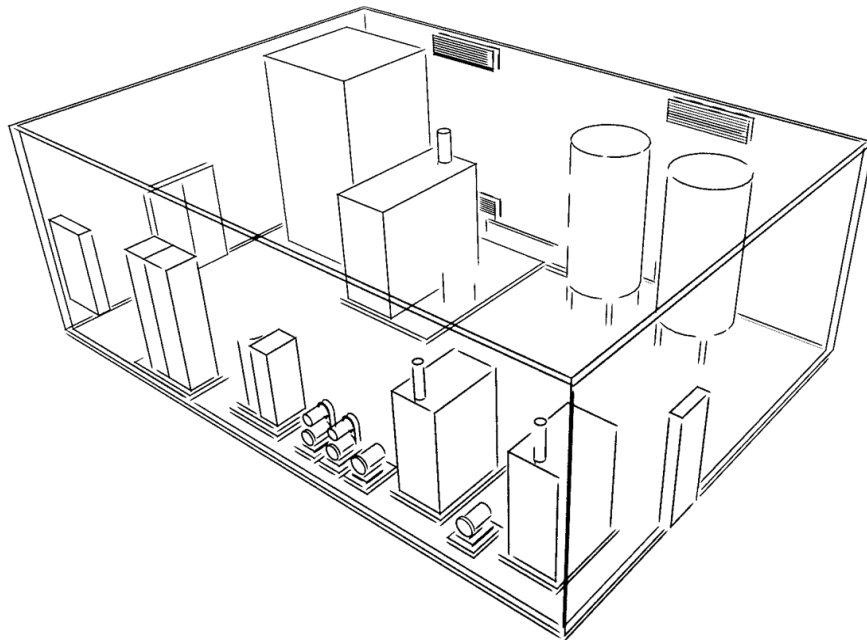




## Space Planning & Co-ordination Software



[www.cadline.co.uk](http://www.cadline.co.uk)



[www.cadlinecommunity.co.uk](http://www.cadlinecommunity.co.uk)

**AUTODESK**  
Platinum Partner  
Consulting Specialized

# The Challenges

cyspace

CySpace software is for the early design of plantrooms and risers in buildings.

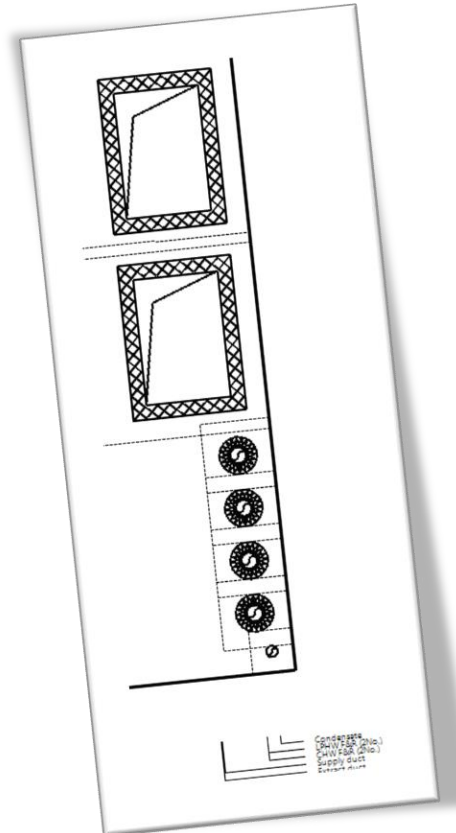
The software selects and sizes equipment and creates layouts based on manufacturers' plant and user entered data.

Layouts and selections can be output to schedules, CAD and Revit.

The software enables engineers to produce high quality outputs in minutes rather than hours of laborious work.

Productivity savings can add to profit margin.

The speed enables more expeditious space awareness planning and coordination.



[www.cadline.co.uk](http://www.cadline.co.uk)



[www.cadlinecommunity.co.uk](http://www.cadlinecommunity.co.uk)

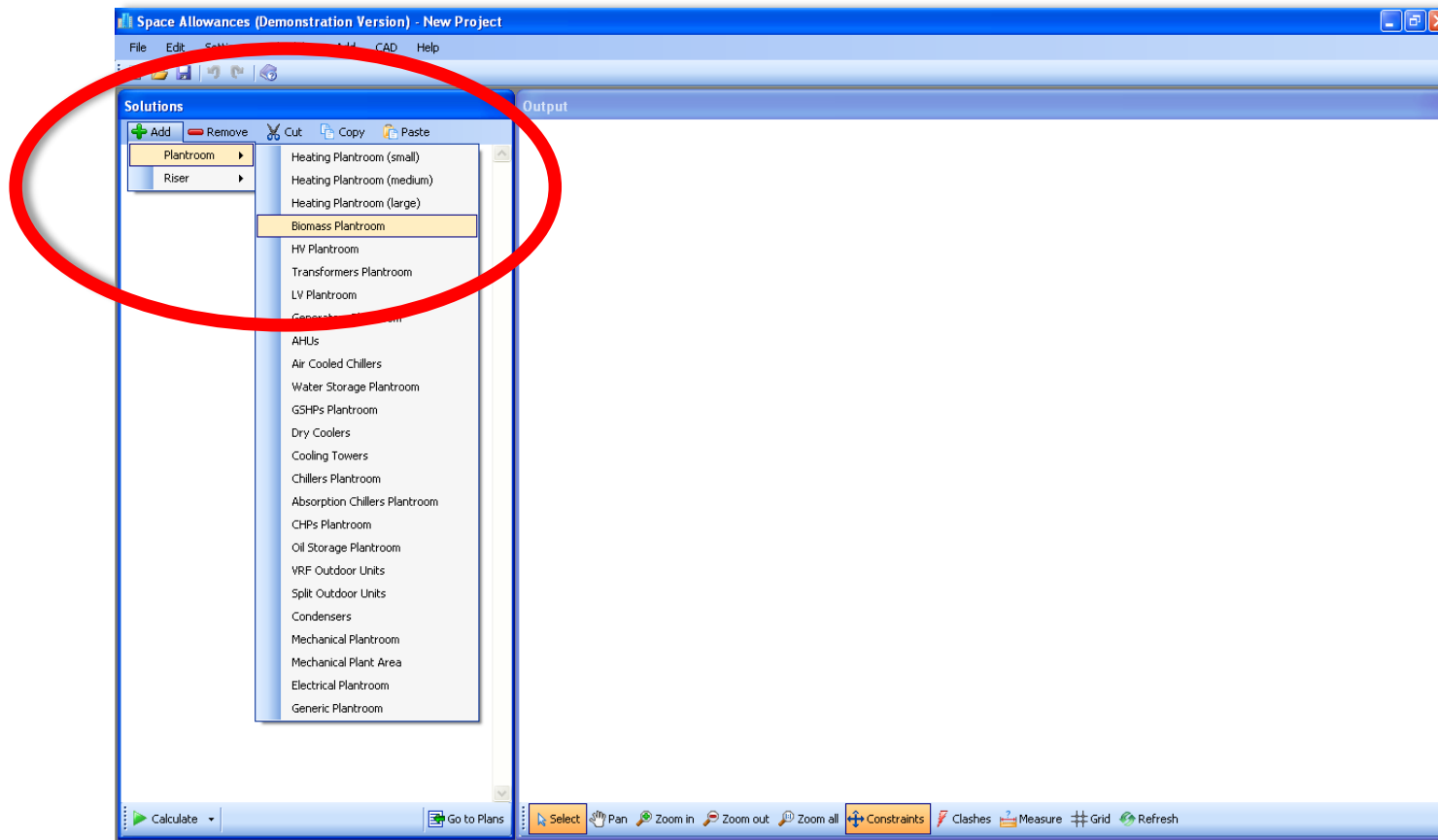


**AUTODESK**

Platinum Partner

Consulting Specialized

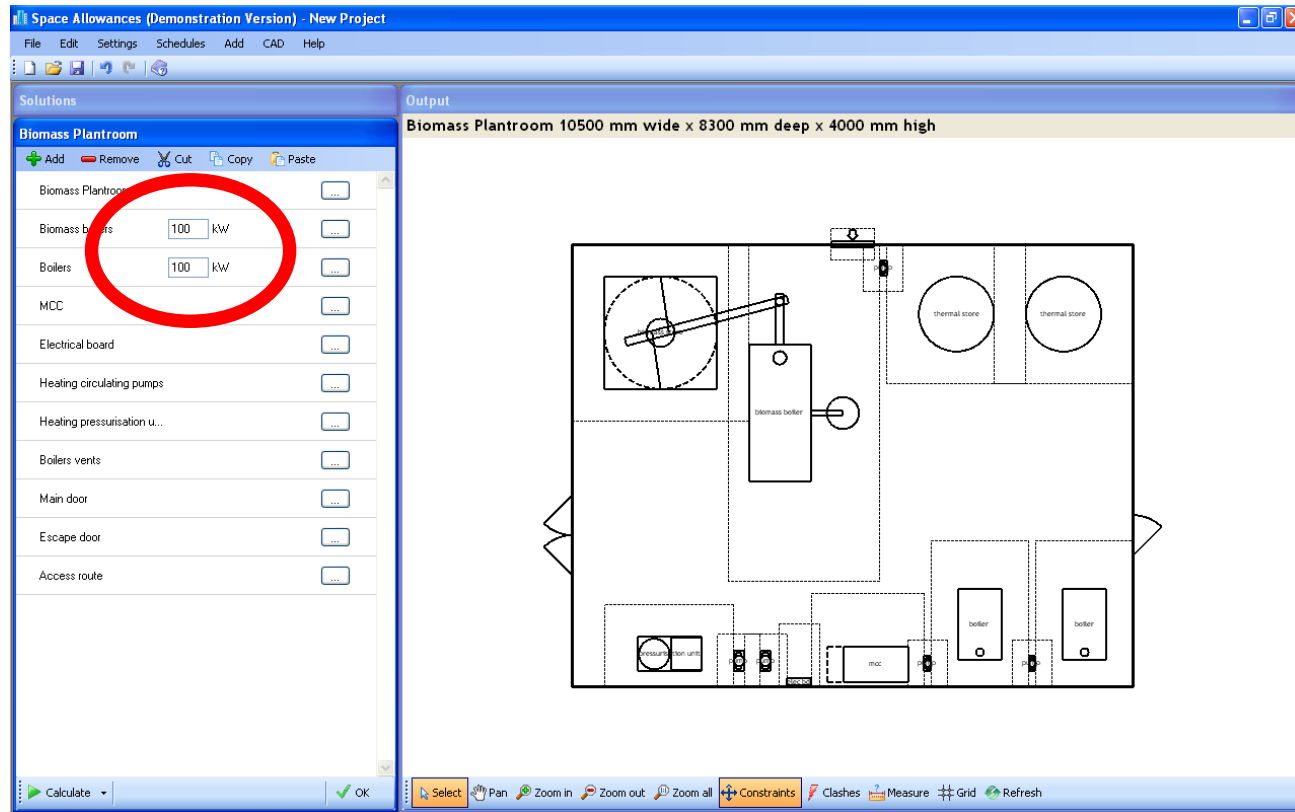
# Adding Solutions



Any number of plantroom and riser solutions can be added. These solutions can be configured to suit user requirements.



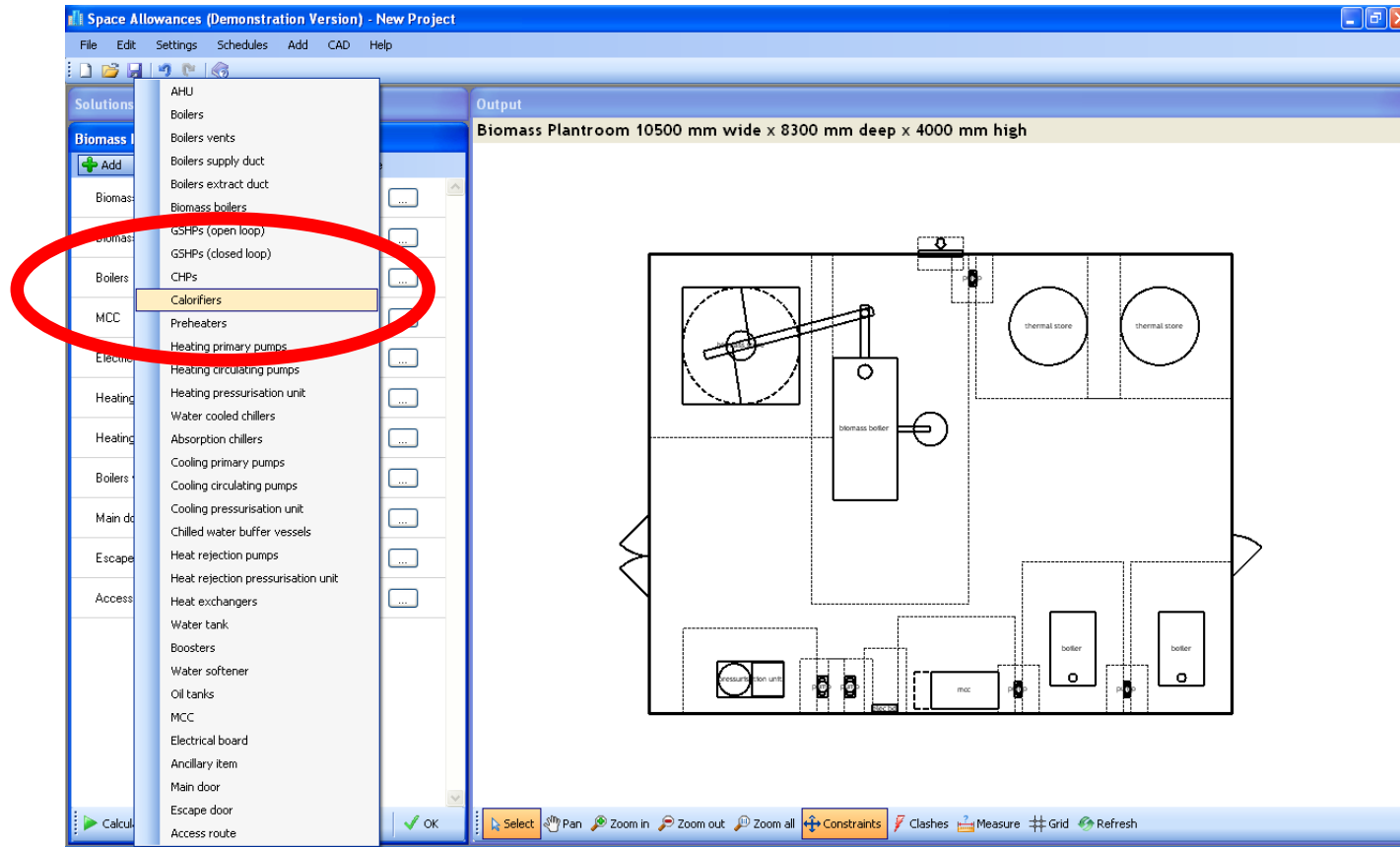
# Calculating & Editing Solutions



Calculate will select and size the equipment and create the layout. The solutions can be edited via the key values and in more detail via the equipment forms.



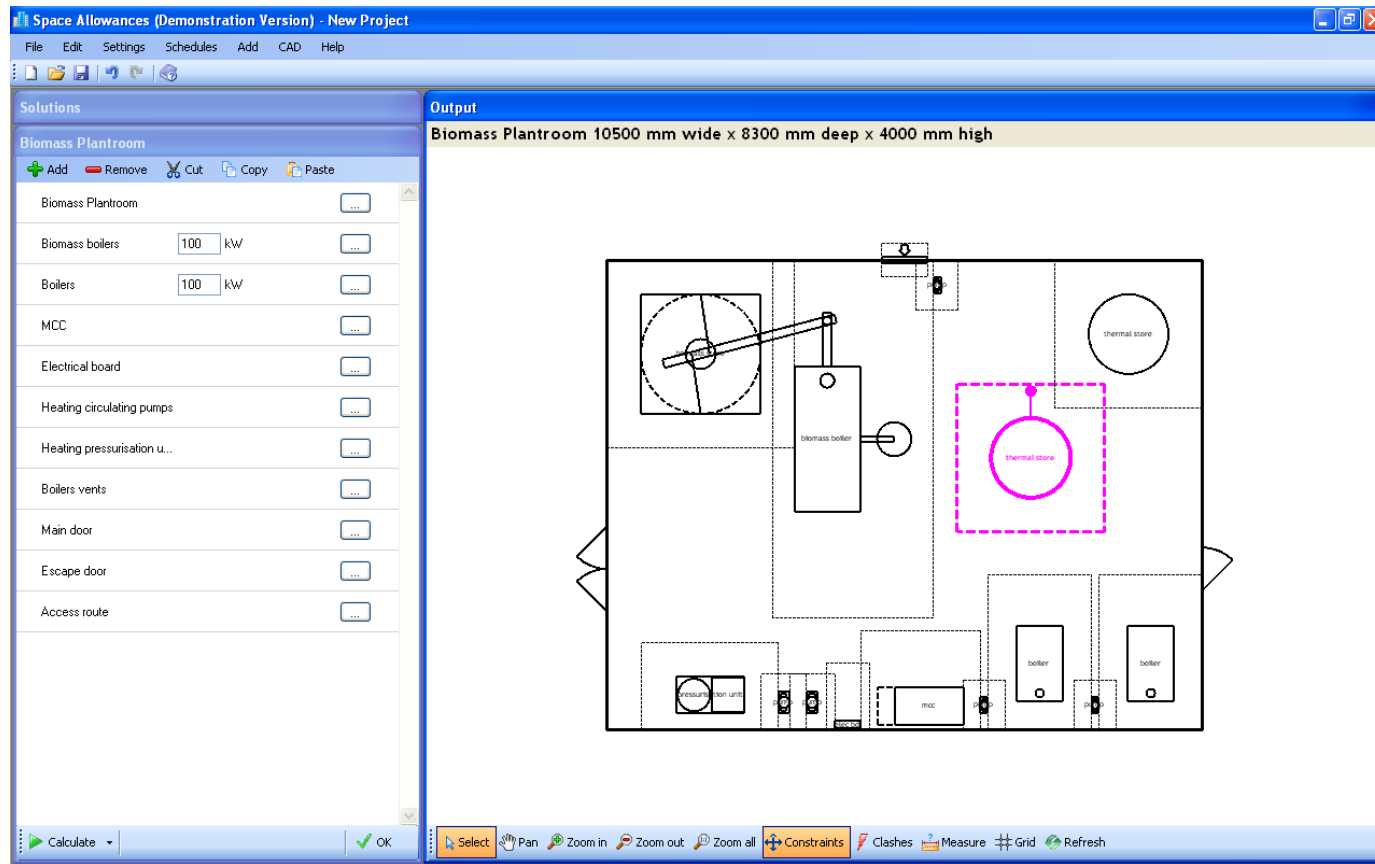
# Adding & Removing Equipment



Any number of equipment items can be added and removed from the solutions providing total flexibility.



# Moving & Co-ordinating Equipment

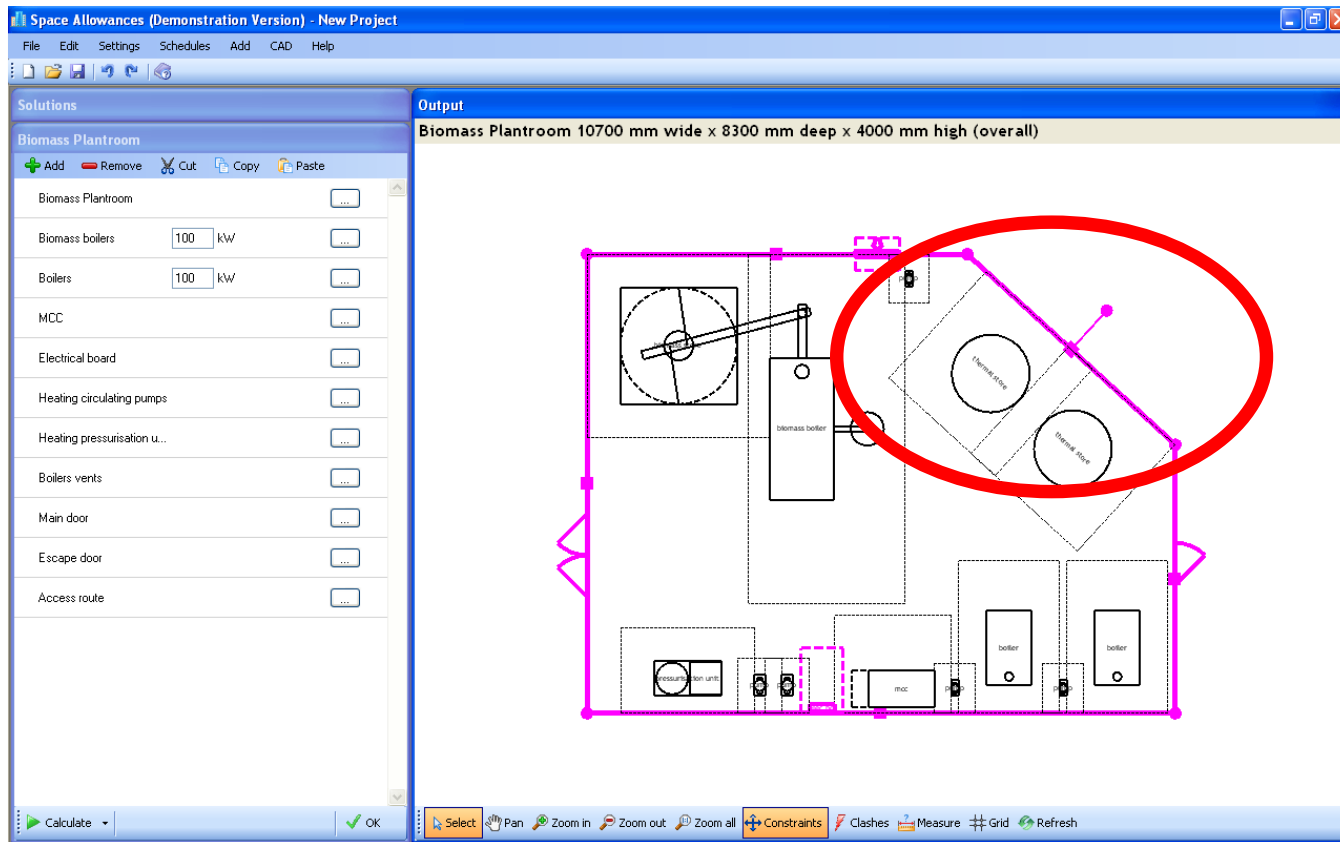


The layout can be edited via the drawing by dragging equipment, walls etc. to optimise space requirements.



# Customising Layouts

cyspace



Plant room footprint can be edited to any shape to match the underlying plan or new faces added.



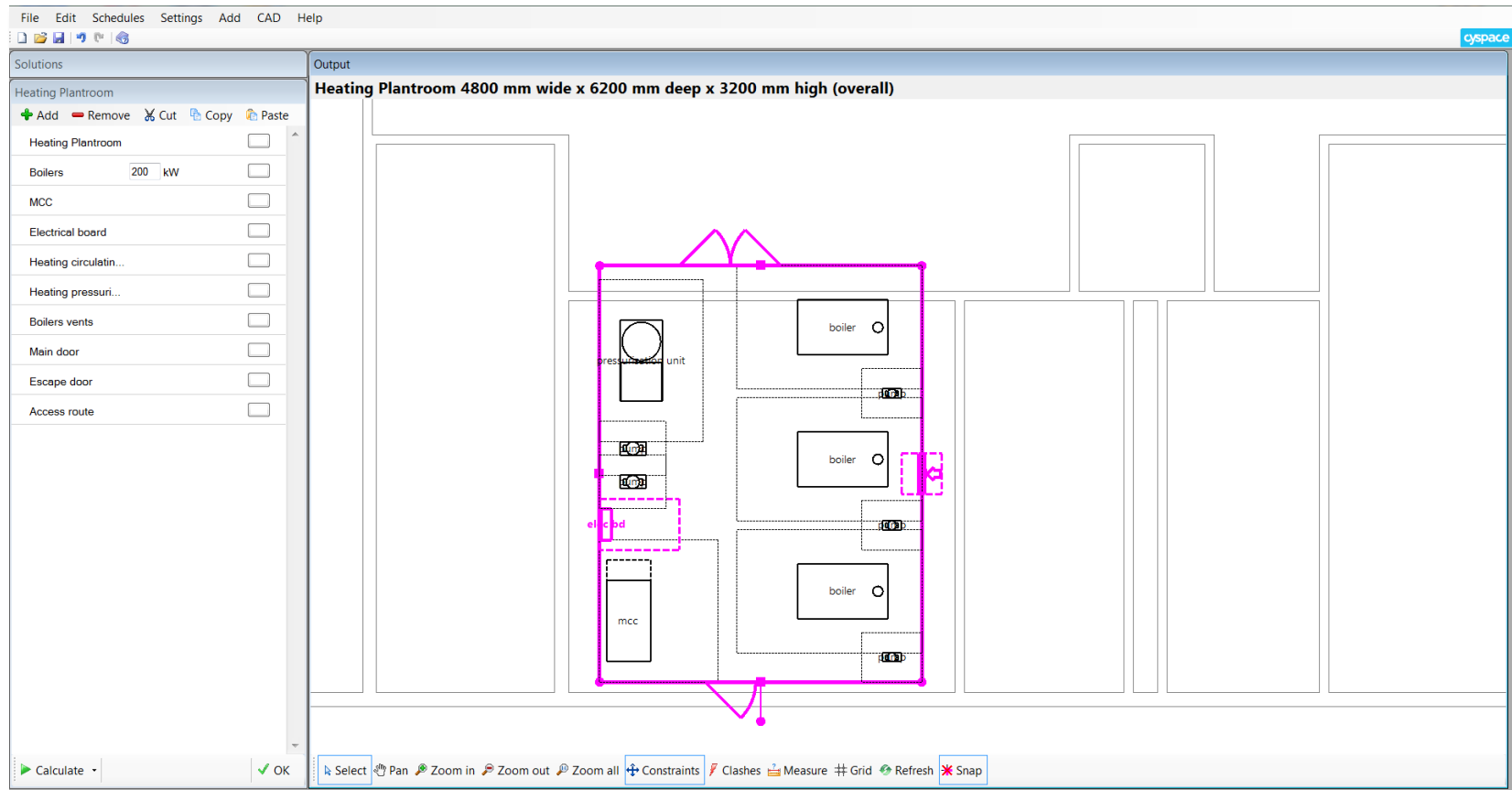
[www.cadline.co.uk](http://www.cadline.co.uk)



[www.cadlinecommunity.co.uk](http://www.cadlinecommunity.co.uk)

**AUTODESK**  
Platinum Partner  
Consulting Specialized

# Importing DXF Backgrounds

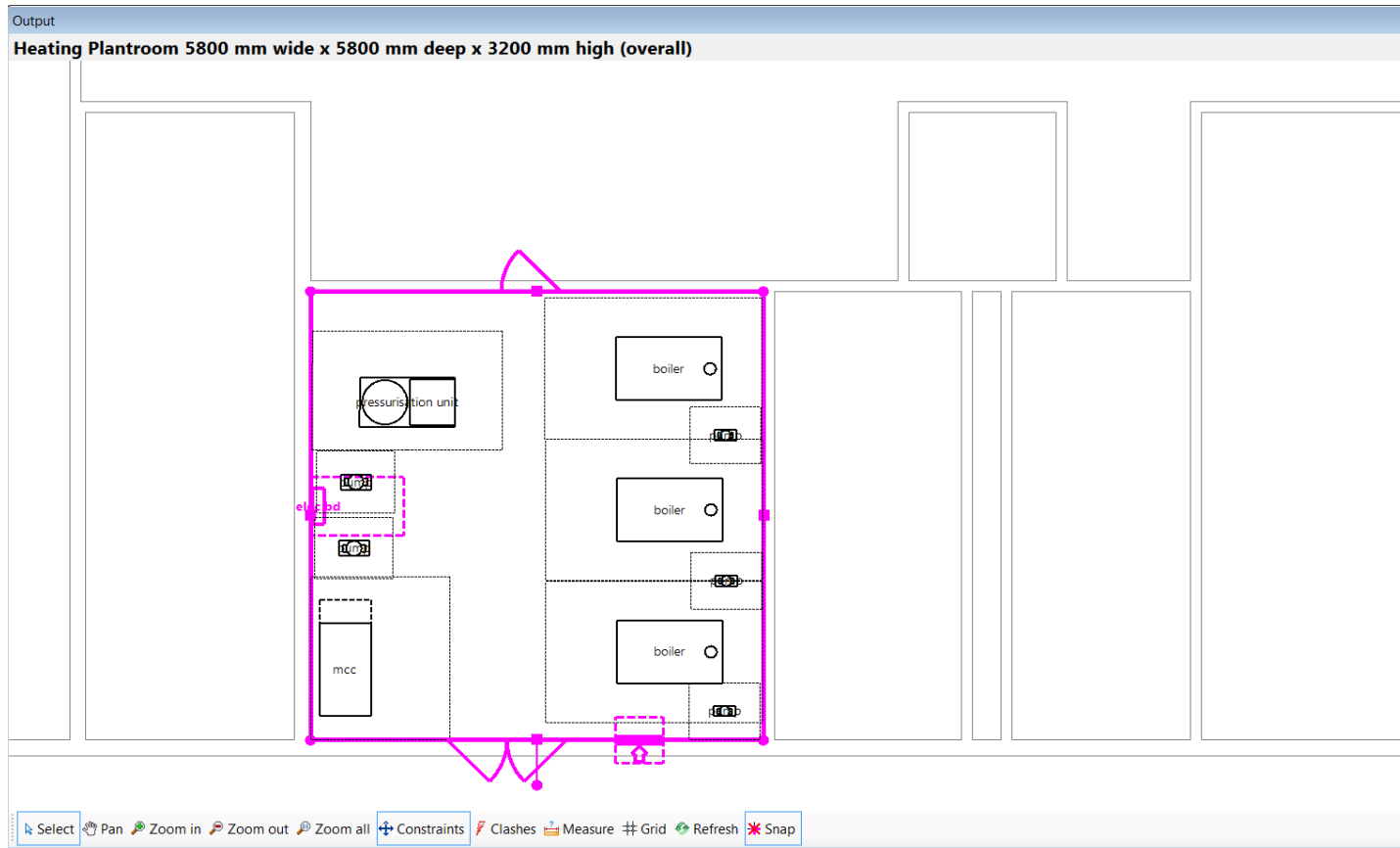


DXF backgrounds can be imported to snap to the drawings and annotated with key dimensions and notes.



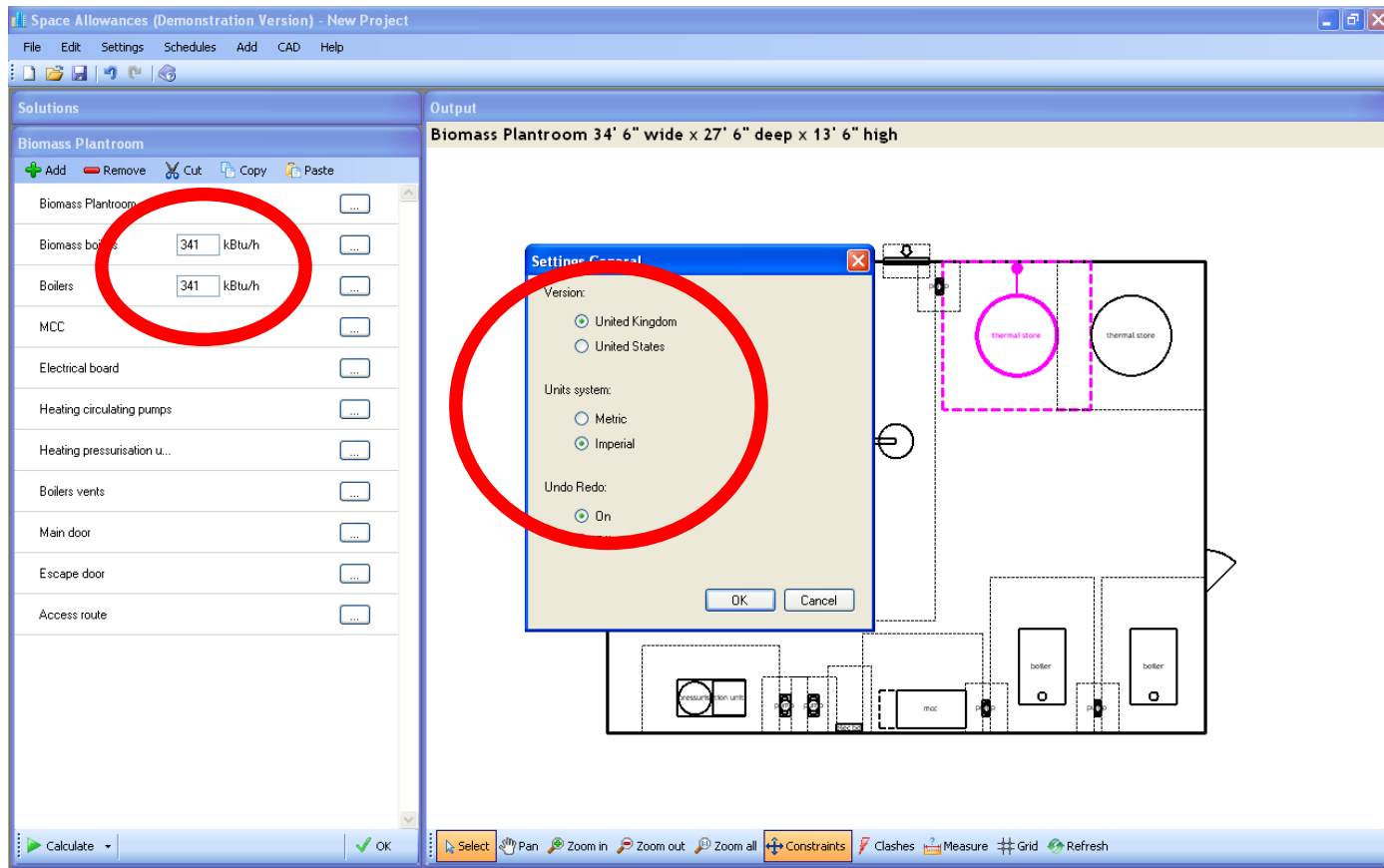


# Move Wall and Plant to Check Clearances



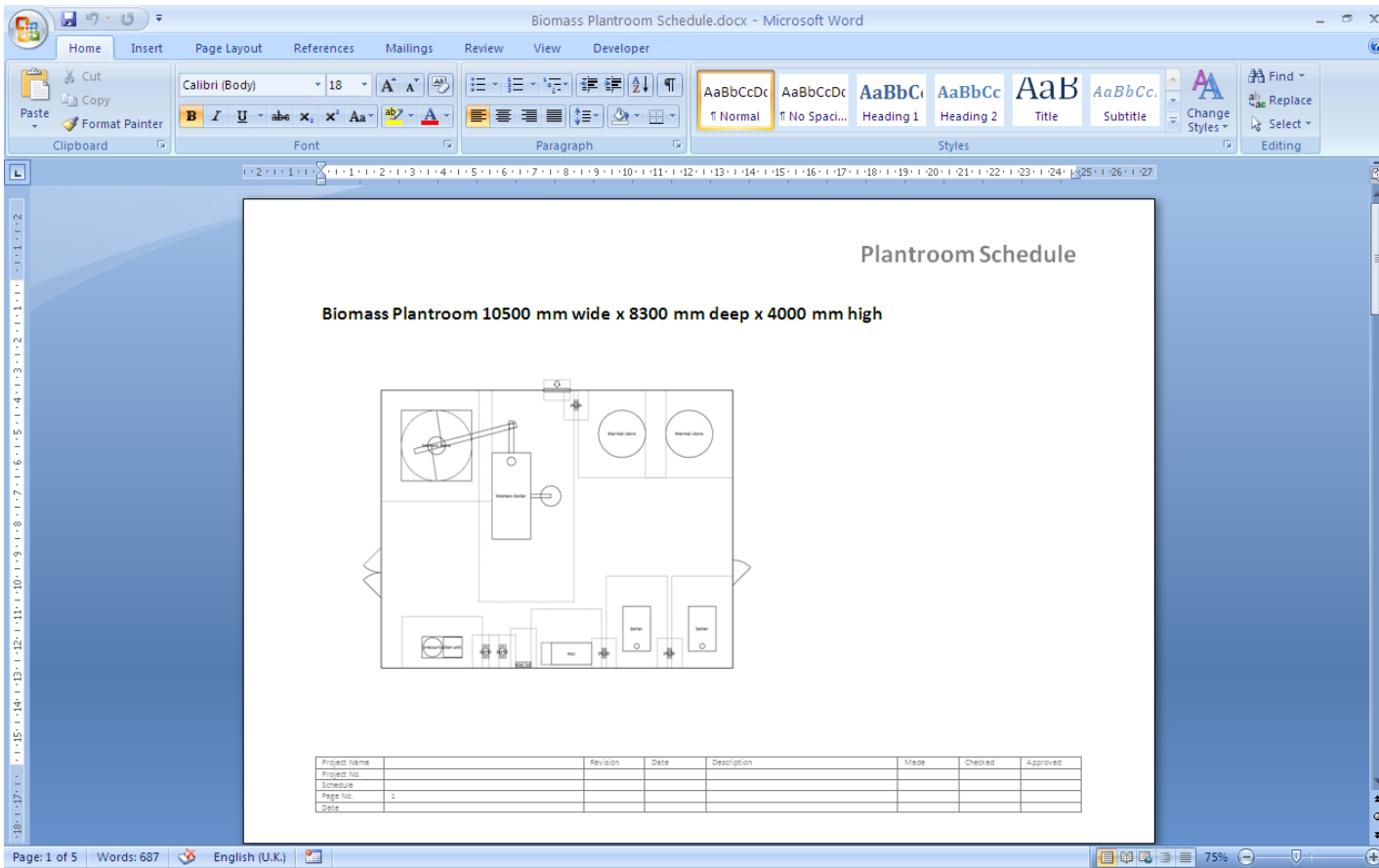
Walls can be moved and plant re arranged to check fit with plantroom allocation. Consequential changes can be shown.





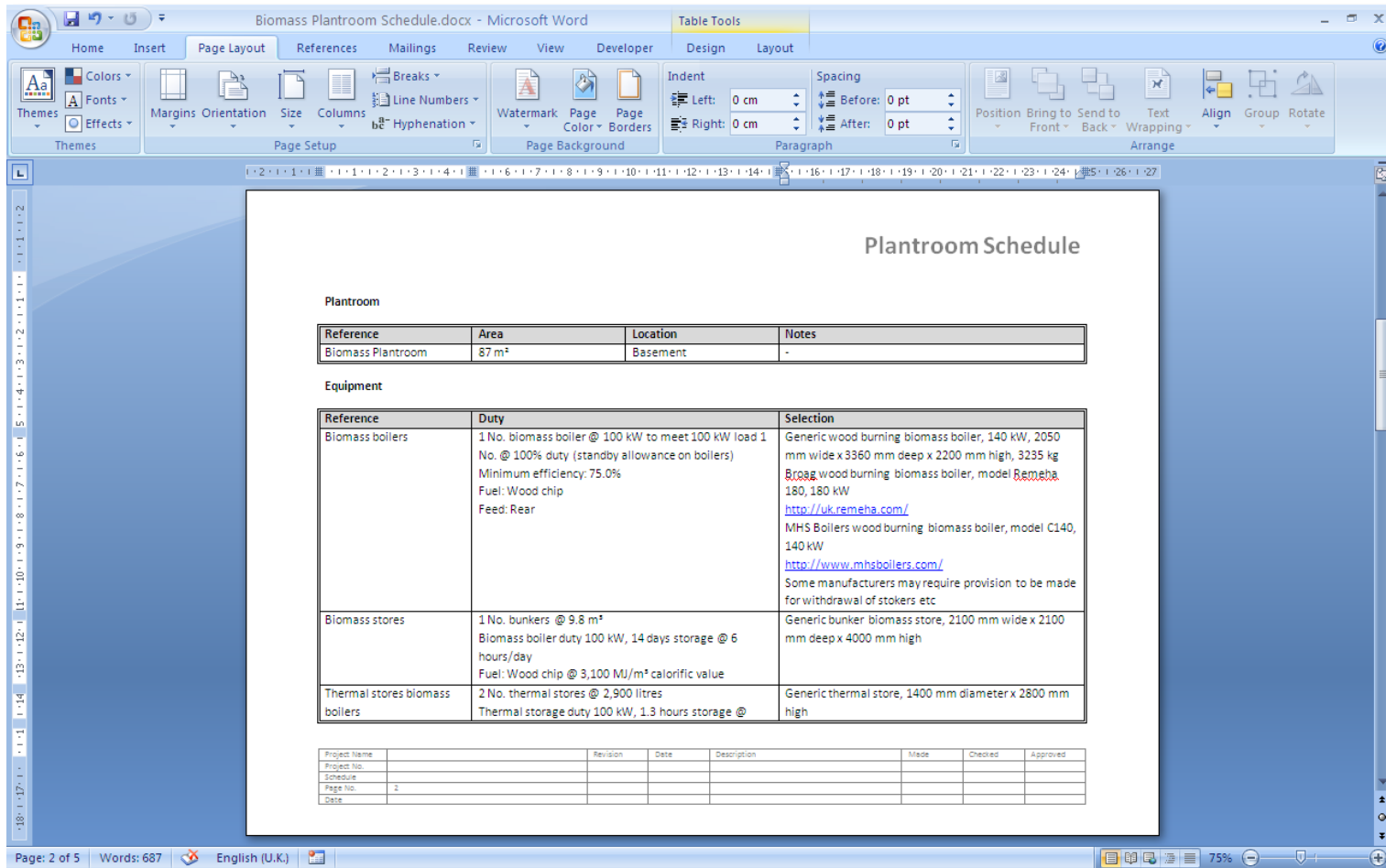
The software includes both UK and US versions and can be set to use metric or imperial units.

# Solution Schedules



Solutions can be output to a Word schedule.  
The schedule includes the layout...





**Plantroom Schedule**

**Plantroom**

Reference	Area	Location	Notes
Biomass Plantroom	87 m²	Basement	-

**Equipment**

Reference	Duty	Selection
Biomass boilers	1 No. biomass boiler @ 100 kW to meet 100 kW load 1 No. @ 100% duty (standby allowance on boilers) Minimum efficiency: 75.0% Fuel: Wood chip Feed: Rear	Generic wood burning biomass boiler, 140 kW, 2050 mm wide x 3360 mm deep x 2200 mm high, 3235 kg Remeha wood burning biomass boiler, model Remeha 180, 180 kW <a href="http://uk.remeha.com/">http://uk.remeha.com/</a> MHS Boilers wood burning biomass boiler, model C140, 140 kW <a href="http://www.mhsboilers.com/">http://www.mhsboilers.com/</a> Some manufacturers may require provision to be made for withdrawal of stokers etc
Biomass stores	1 No. bunkers @ 9.8 m³ Biomass boiler duty 100 kW, 14 days storage @ 6 hours/day Fuel: Wood chip @ 3,100 MJ/m³ calorific value	Generic bunker biomass store, 2100 mm wide x 2100 mm deep x 4000 mm high
Thermal stores biomass boilers	2 No. thermal stores @ 2,900 litres Thermal storage duty 100 kW, 1.3 hours storage @	Generic thermal store, 1400 mm diameter x 2800 mm high

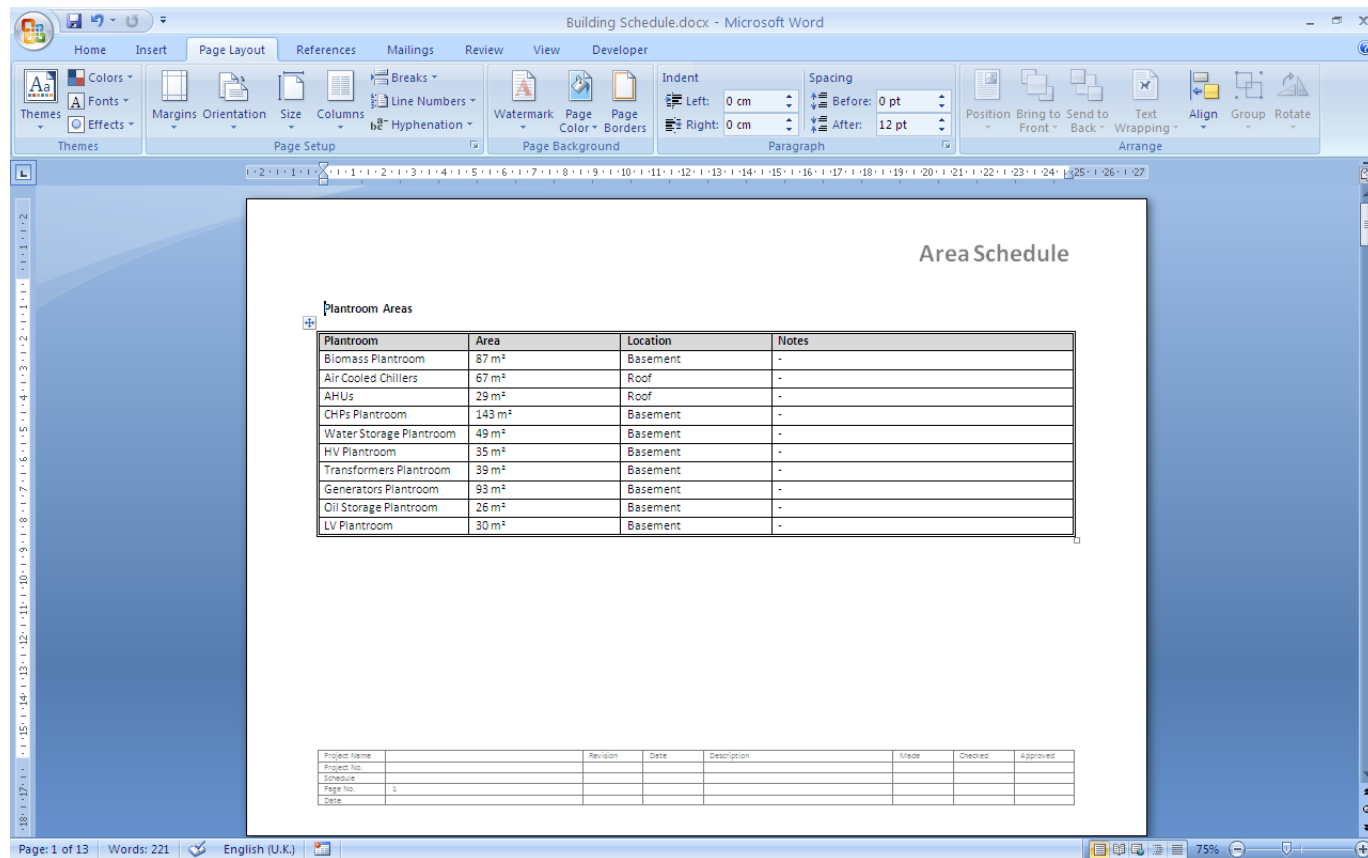
Project Name	Revision	Date	Description	Made	Checked	Approved
Project No.						
Schedule						
Page No.	2					
Date						

...plus equipment selections.



# Building Schedules

cyspace



Building Schedule.docx - Microsoft Word

Area Schedule

Plantroom Areas

Plantroom	Area	Location	Notes
Biomass Plantroom	87 m <sup>2</sup>	Basement	-
Air Cooled Chillers	67 m <sup>2</sup>	Roof	-
AHUs	29 m <sup>2</sup>	Roof	-
CHPs Plantroom	143 m <sup>2</sup>	Basement	-
Water Storage Plantroom	49 m <sup>2</sup>	Basement	-
HV Plantroom	35 m <sup>2</sup>	Basement	-
Transformers Plantroom	39 m <sup>2</sup>	Basement	-
Generators Plantroom	93 m <sup>2</sup>	Basement	-
Oil Storage Plantroom	26 m <sup>2</sup>	Basement	-
LV Plantroom	30 m <sup>2</sup>	Basement	-

Project Name	Revision	Date	Description	Made	Checked	Approved
Project No.						
Schedule						
Page No.	1					
Date						

Page: 1 of 13 Words: 221 English (U.K.) 75%

A summary of all the building solutions can be output to a Word schedule. The schedule includes summary tables of plantroom and riser areas...



[www.cadline.co.uk](http://www.cadline.co.uk)



[www.cadlinecommunity.co.uk](http://www.cadlinecommunity.co.uk)

**AUTODESK**  
Platinum Partner  
Consulting Specialized

# Building Schedules

cyspace

The screenshot shows a Microsoft Word document titled "Building Schedule.docx". The ribbon includes Home, Insert, Page Layout, References, Mailings, Review, View, and Developer. The Page Layout tab is active, showing options for Margins, Orientation, Size, Columns, Breaks, Line Numbers, Hyphenation, Watermark, Page Color, Page Borders, Indent, Spacing, Paragraph, and Arrange. The document content is titled "Area Schedule" and describes the "Generators Plantroom 9400 mm wide x 10000 mm deep x 4100 mm high". Below the text is a schematic diagram of the plantroom layout, showing two generators, a control panel, and various electrical components. At the bottom of the diagram is a table with the following structure:

Project Name	Revision	Date	Description	Made	Checked	Approved
Project No.						
Schedule						
Page No.	11					
Date						

The status bar at the bottom indicates "Page: 11 of 13", "Words: 221", "English (U.K.)", and a zoom level of 75%.

...plus layouts of each of the solutions.

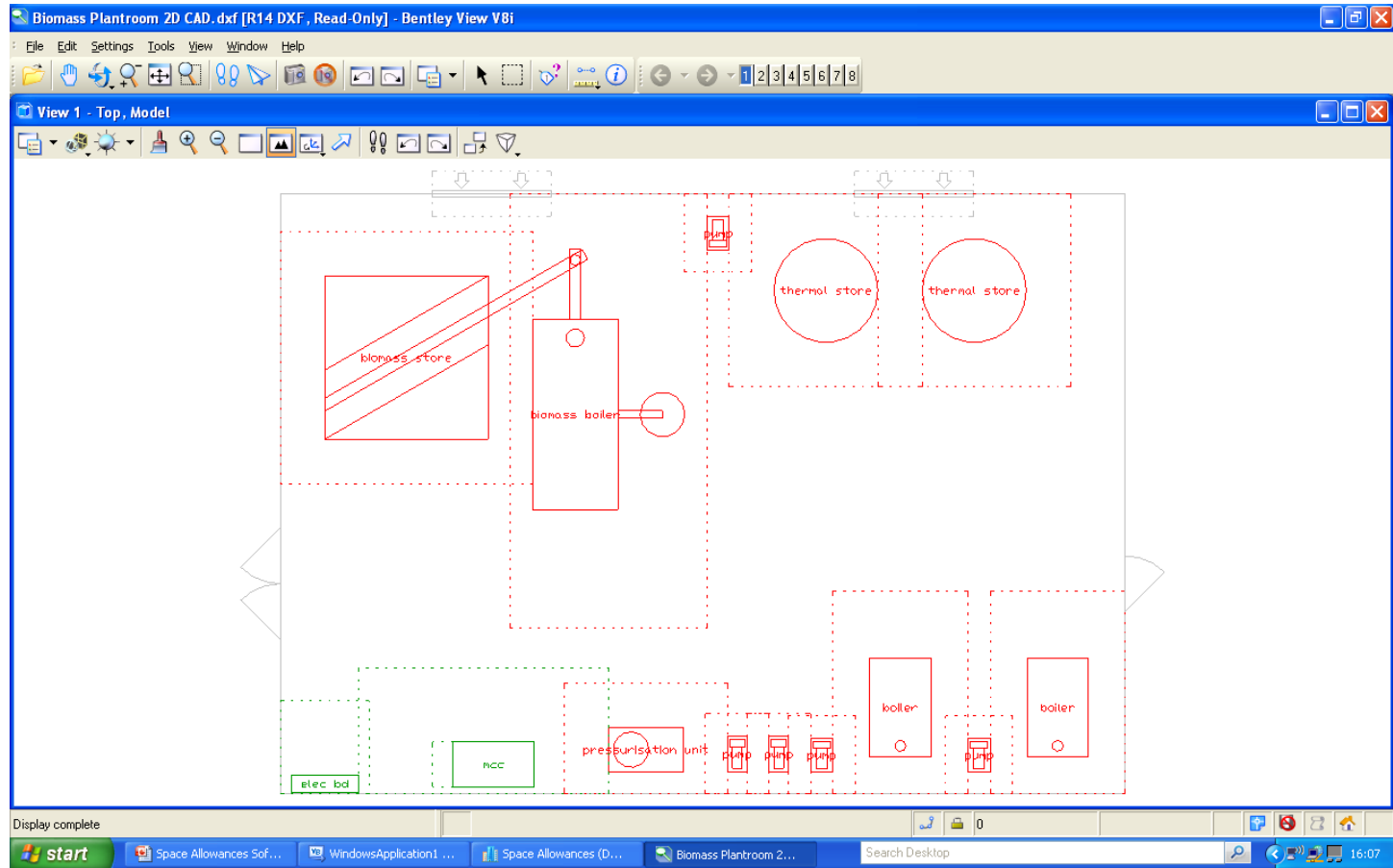


[www.cadline.co.uk](http://www.cadline.co.uk)



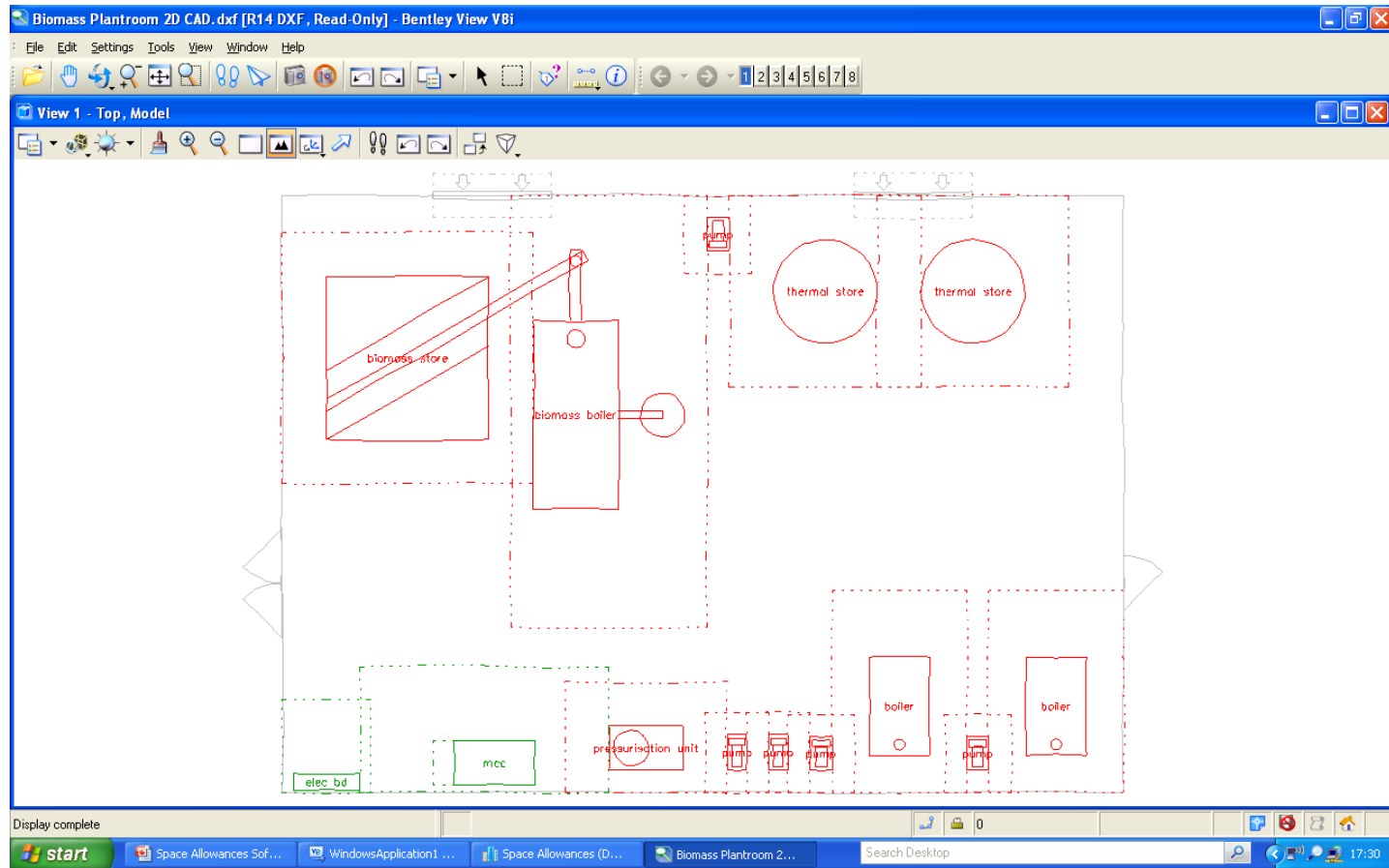
[www.cadlinecommunity.co.uk](http://www.cadlinecommunity.co.uk)

**AUTODESK**  
Platinum Partner  
Consulting Specialized



2D CAD layouts of the solutions can be output in DXF format...

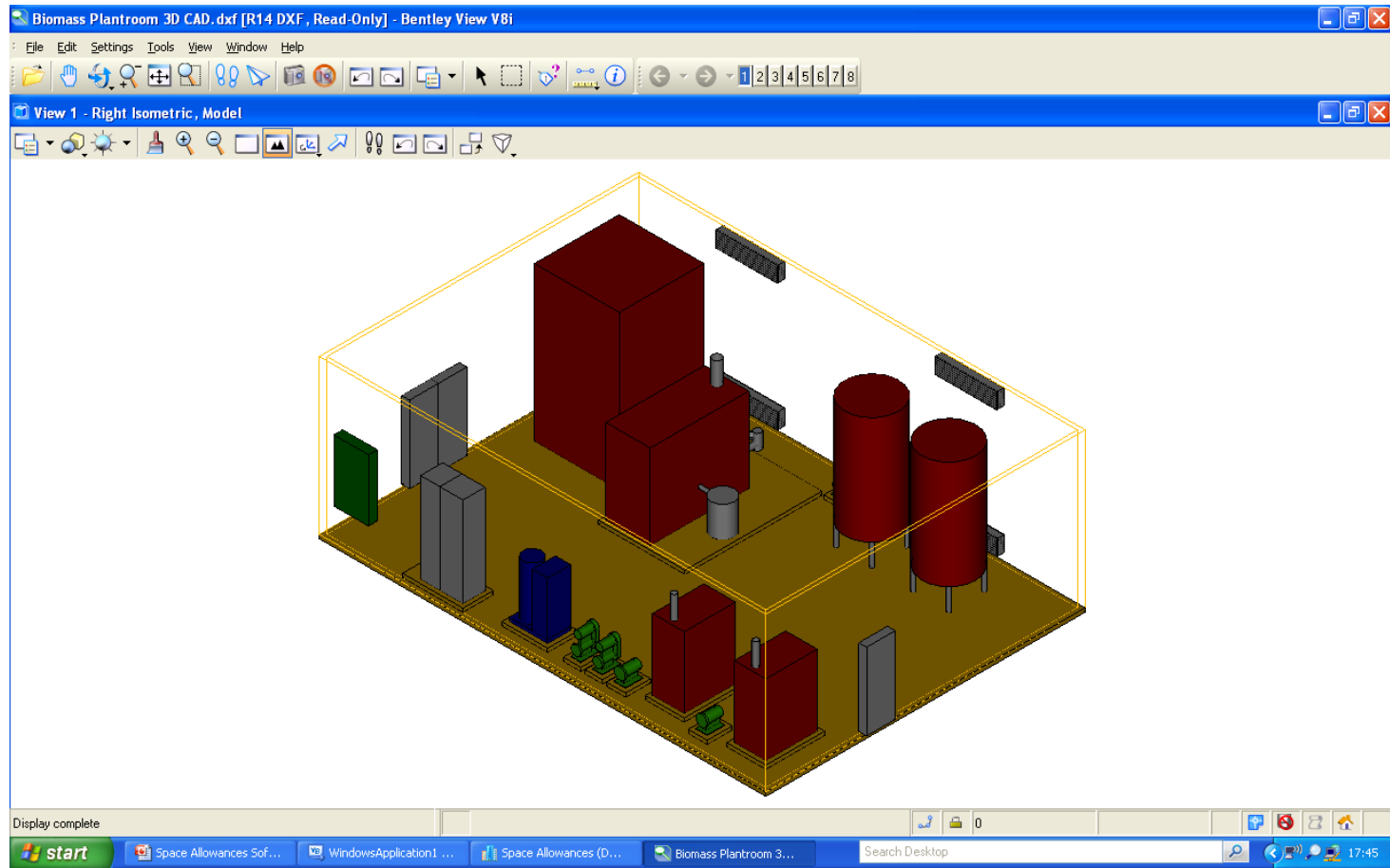




...with an option of the output being in sketch style.





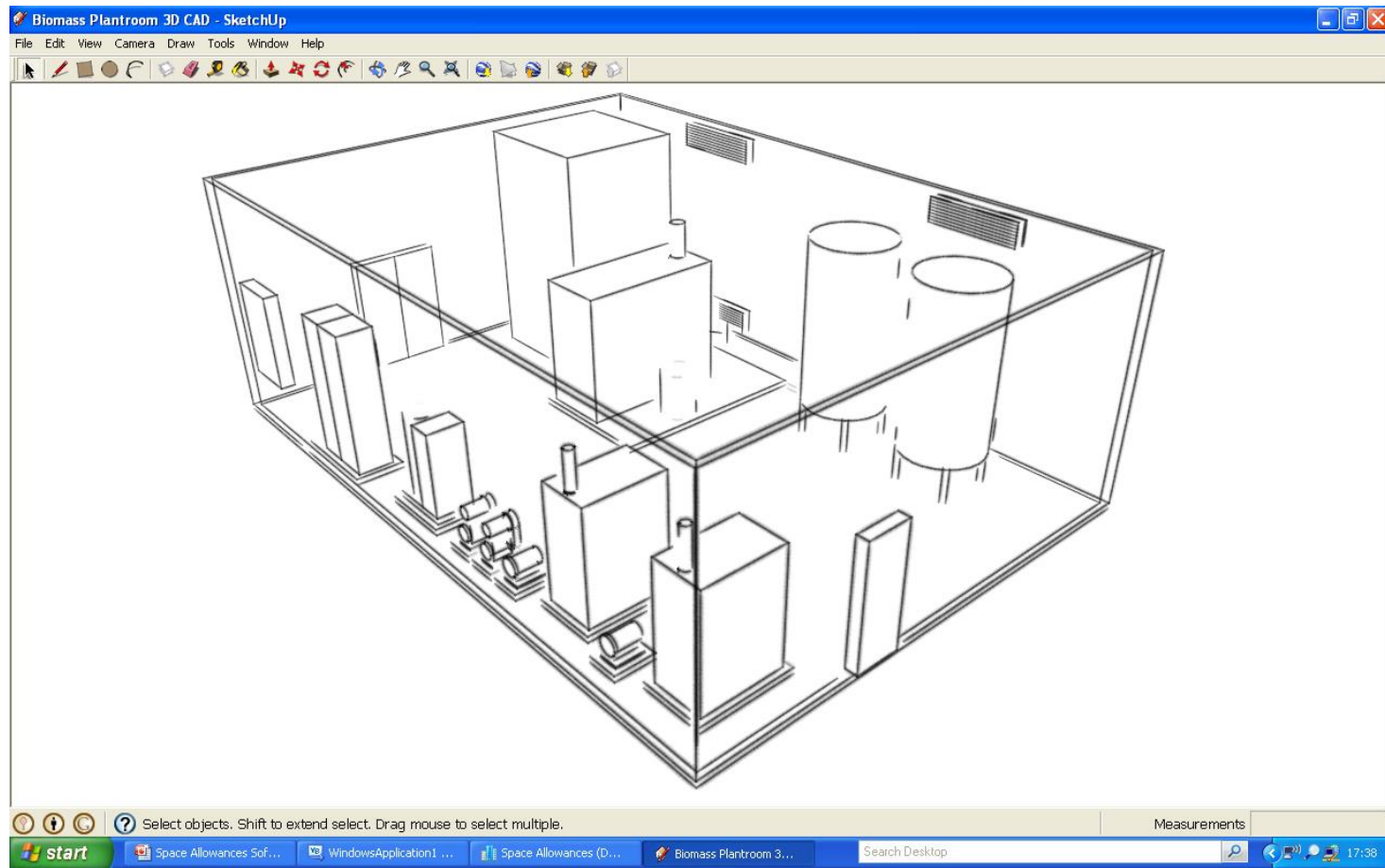


3D CAD layouts of the solutions can be output in DXF format...



# CAD 3D Outputs

cyspace



...with an option of the output being suitable for Google SketchUp.

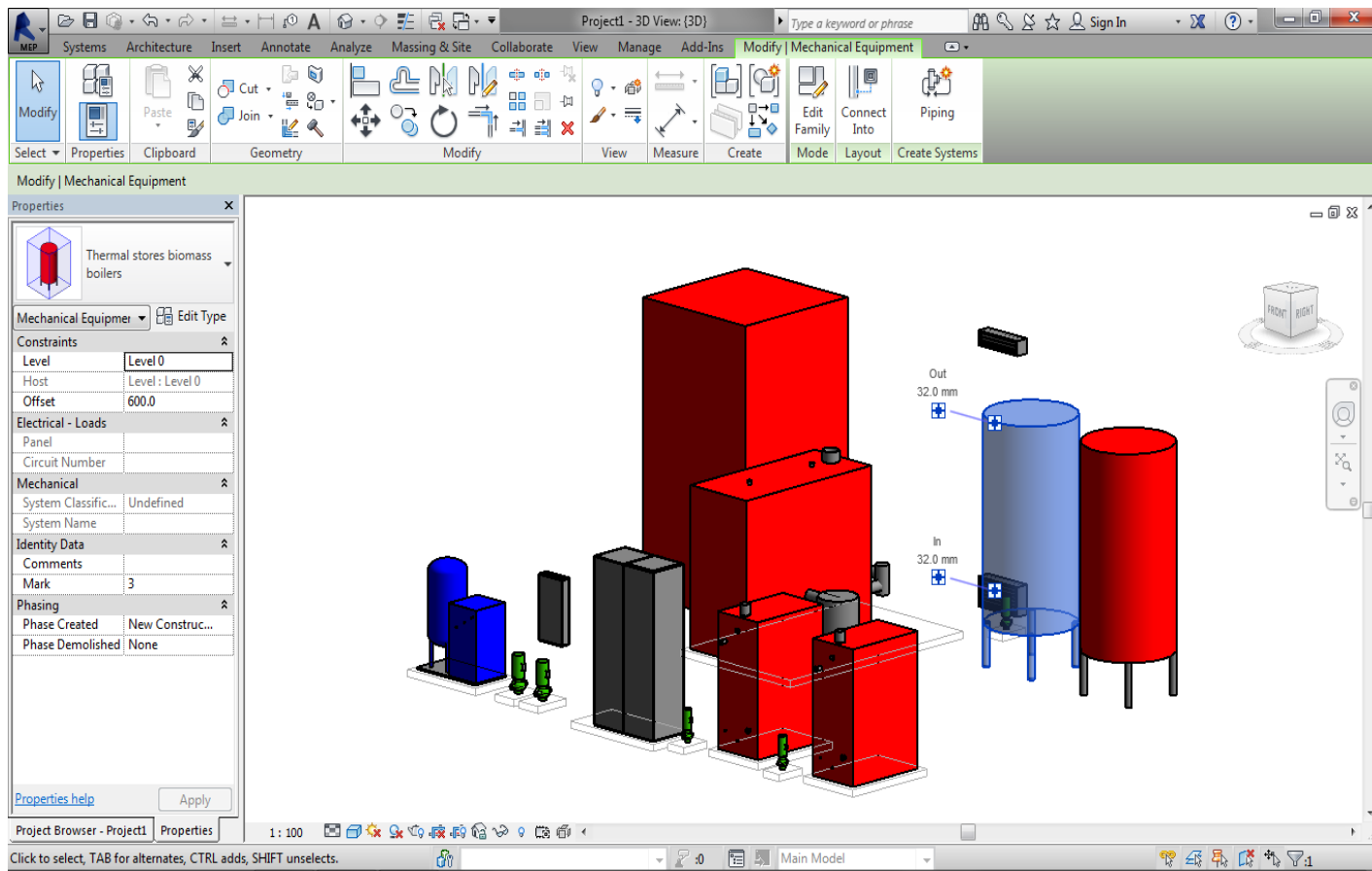


[www.cadline.co.uk](http://www.cadline.co.uk)



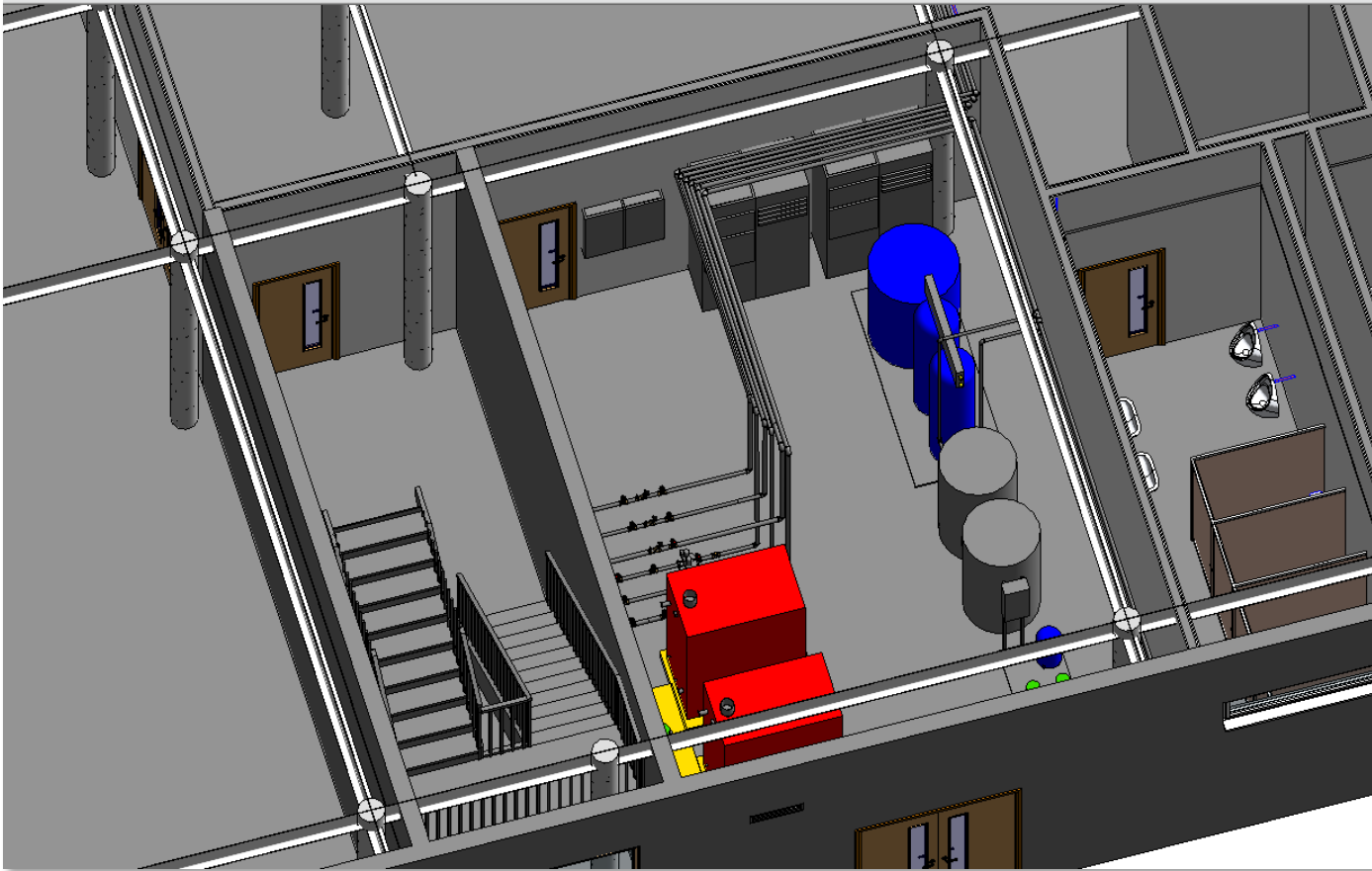
[www.cadlinecommunity.co.uk](http://www.cadlinecommunity.co.uk)

**AUTODESK**  
Platinum Partner  
Consulting Specialized



Solutions can be imported into Revit by creating equipment families. The families include parameters and connections for systems routing.

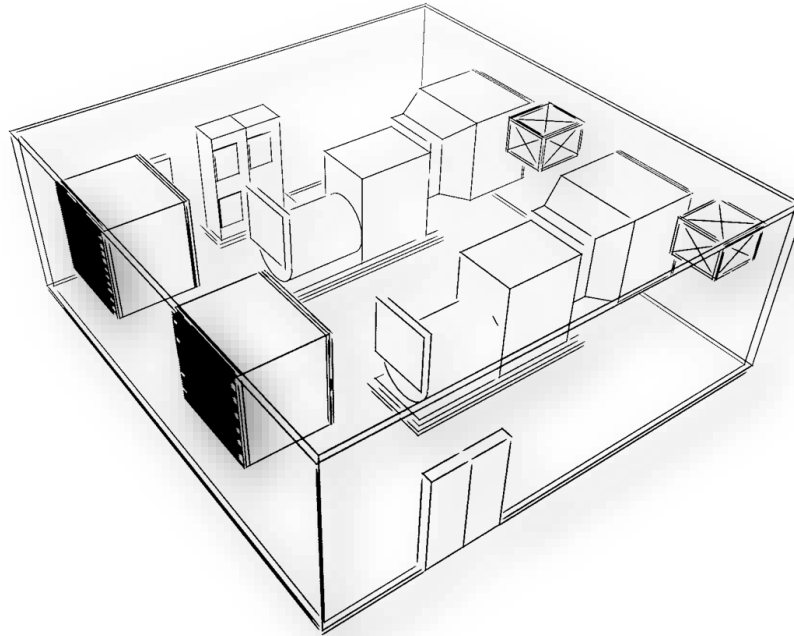




Solutions can be imported into Revit models where in conjunction with CyLINK, pipework and ductwork can be routed and connected.



# cyspace



For further information please contact Cadline on:

Tel: +44 (0) 1784 419922

<http://www.cadline.co.uk/Cadline/ContactUs>



[www.cadline.co.uk](http://www.cadline.co.uk)



[www.cadlinecommunity.co.uk](http://www.cadlinecommunity.co.uk)

**AUTODESK**  
Platinum Partner  
Consulting Specialized